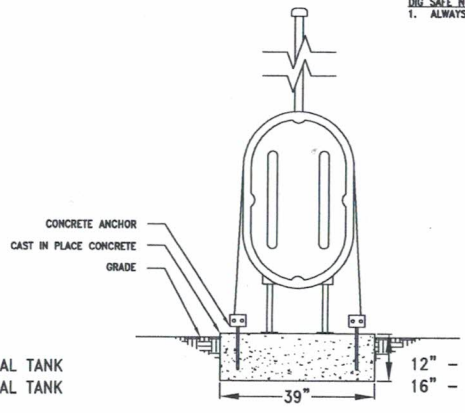
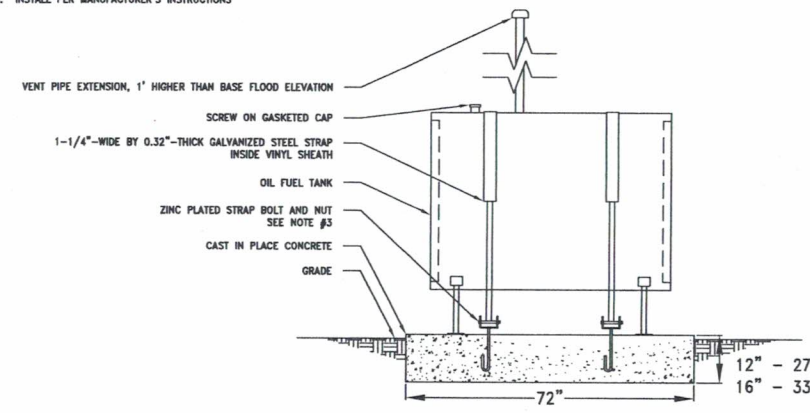


- GROUND ANCHOR NOTES:**
- EARTH AUGER CAPABILITY AND CAPACITY ARE PERTINENT TO SOIL CONDITIONS. SOIL TESTING TO BE PERFORMED PRIOR TO EARTH AUGER INSTALLATION.
 - SANDY GRAVEL AND GRAVEL; VERY DENSE OR CEMENTED SANDS; COURSE GRAVE/COBBLES; PRELOADED SILTS, CLAYS AND CORALS; SOILS REQUIRE MINIMUM OF 30" ANCHOR WITH (2) 4" HELIX AUGER
 - SANDY; SILTY SAND; CLAYEY SAND; SILTY GRAVEL; MEDIUM DENSE COURSE SANDS; SANDY GRAVEL; AND VERY STIFF SILT, SAND CLAY; SOILS REQUIRE MINIMUM OF 34" ANCHOR WITH (1) 6" HELIX AUGER
 - LOOSE TO MEDIUM DENSE SANDS; FIRM TO STIFF CLAYS AND SILTS; ALLUVIAL FILLS; SOILS REQUIRE MINIMUM OF 48" ANCHOR WITH (1) 6" HELIX AUGER
 - LOOSE SANDS; FIRM CLAYS; ALLUVIAL FILLS; SOILS REQUIRE MINIMUM OF 60" ANCHOR WITH (1) 6" HELIX AUGER
 - TANK SUPPORT LEGS VARY, DEPENDING ON MANUFACTURE'S DESIGN. EACH LEG TO BE SET ON UNREINFORCED CONCRETE FOOTING PAD 3" H x 6" W x 12" L
 - GROUND ANCHORS GALVANIZED STEEL 1/2" - DIAMETER WITH HELIX AUGER, MINUTE MAN OR APPROVED EQUAL
 - ZINC PLATED STRAP BOLT AND NUT, MINUTE MAN MMASBN OR APPROVED EQUAL
 - INSTALL PER MANUFACTURER'S INSTRUCTIONS

1 TANK ANCHORING WITH EARTH AUGER
SCALE: N.T.S.

- DIG SAFE NOTES:**
- ALWAYS CHECK FOR UNDERGROUND UTILITIES BEFORE INSTALLING EARTH AUGER.



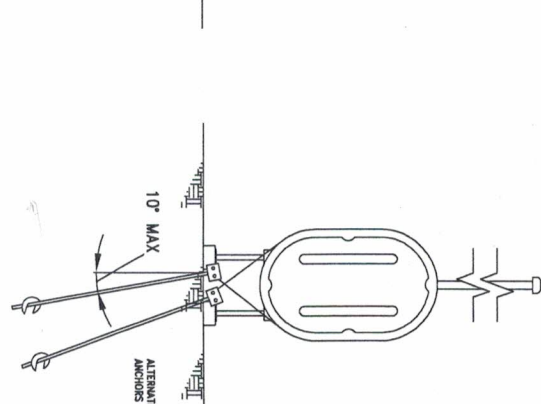
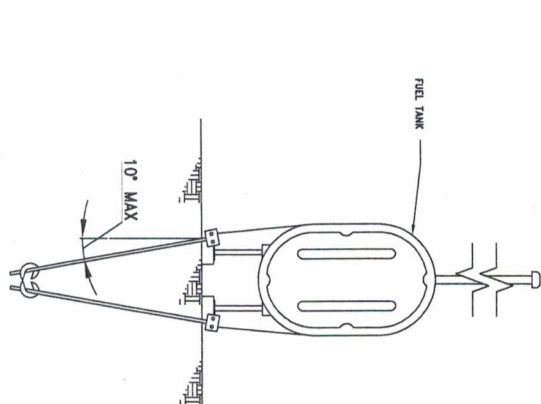
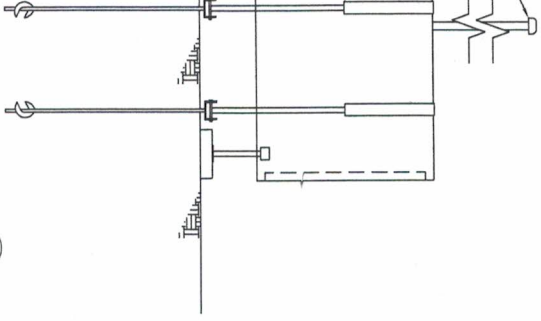
- CONCRETE SLAB NOTES:**
- ANCHORS FOR WET CONCRETE INSTALLATION, MINUTE MAN MMA42-210JWH OR APPROVED EQUAL
 - DRY CONCRETE ANCHOR FOR PREEXISTING CONCRETE SLAB, MINUTE MAN MMA18-TDHLS OR APPROVED EQUAL
 - ZINC PLATED STRAP BOLT AND NUT, MINUTE MAN MMASBN OR APPROVED EQUAL
 - INSTALL PER MANUFACTURER'S INSTRUCTIONS
 - CAST IN PLACE CONCRETE:
 - 275 GAL TANK 72" L x 39" W x 12" H
 - 330 GAL TANK 72" L x 39" W x 16" H
 - CONCRETE MINIMUM 28 DAY COMPRESSIVE STRENGTH OF 4,000 PSI
 - CONCRETE SLUMP - 3"-5"; AIR ENTRAINMENT - 5% TO 8%
 - FINISH TOP OF CONCRETE TO SHED WATER

2 TANK ANCHORING ON CONCRETE SLAB
SCALE: N.T.S.

CATSKILL WATERSHED CORPORATION
RESIDENTIAL FUEL STORAGE TANKS
ANCHORING DETAILS

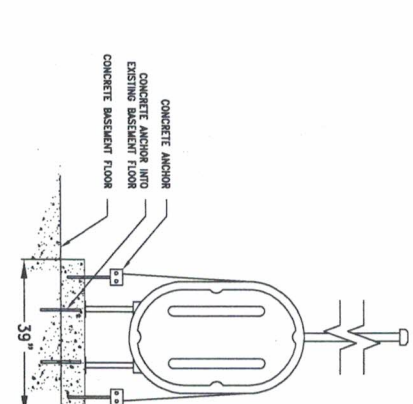
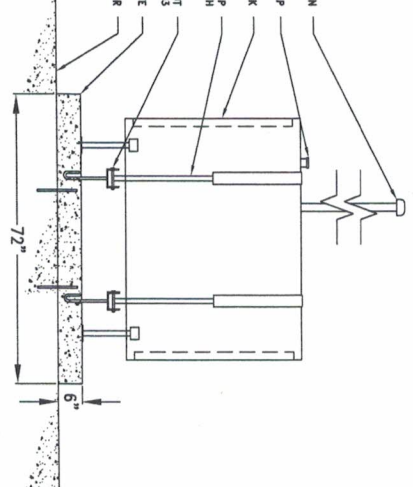
ABOVE GRADE
FUEL STORAGE
TANK
275 & 330
GALLON

- GROUND ANCHOR NOTES:**
1. EARTH ANCHOR CAPABILITY AND CAPACITY ARE PERTINENT TO SOIL CONDITIONS. SOIL TESTING TO BE PERFORMED PRIOR TO EARTH ANCHOR INSTALLATION. AND GRANT. VERY DENSE OR CEMENTED SANDS, COARSE GRAVE/COBBLES, PRELOADED SILTS, CLAYS AND COALS; SOILS REQUIRE MINIMUM OF 30" ϕ ANCHOR WITH (2) ϕ HELIX ANCHER SILEY SAND, CLAYT SAND, SILTY GRAVEL, MEDIUM DENSE SAND, SANDY GRAVEL AND VERY STIFF SILT, SAND CLAY; SOILS REQUIRE MINIMUM OF 34" ANCHOR WITH (1) ϕ HELIX ANCHER
 2. LOOSE TO MEDIUM DENSE SANDS FROM TO STIFF CLAYS AND SILTS; ALLUVIAL FILLS; SOILS REQUIRE MINIMUM OF 40" ANCHOR
 3. LOOSE SANDS, FIRM CLAYS, ALLUVIAL FILLS; SOILS REQUIRE MINIMUM OF 60" ANCHOR WITH (1) ϕ HELIX ANCHER
 4. EACH LEG TO BE SET ON UNREINFORCED CONCRETE FOOTING PAD 3" x 6" INCHES GALVANIZED STEEL, $\frac{1}{2}$ " - DIAMETER WITH HELIX ANCHER, WHITE MAN OR APPROVED EQUAL
 5. ZINC PLATED STRAP BOLT AND NUT, WHITE MAN WILKINSON OR APPROVED EQUAL
 6. INSTALL PER MANUFACTURER'S INSTRUCTIONS



1 TANK ANCHORING WITH EARTHEN FLOOR
SCALE: N.T.S.

SEE SHEET NOTES:
1. ALWAYS CHECK FOR UNDERGROUND UTILITIES BEFORE INSTALLING EARTH ANCHER.

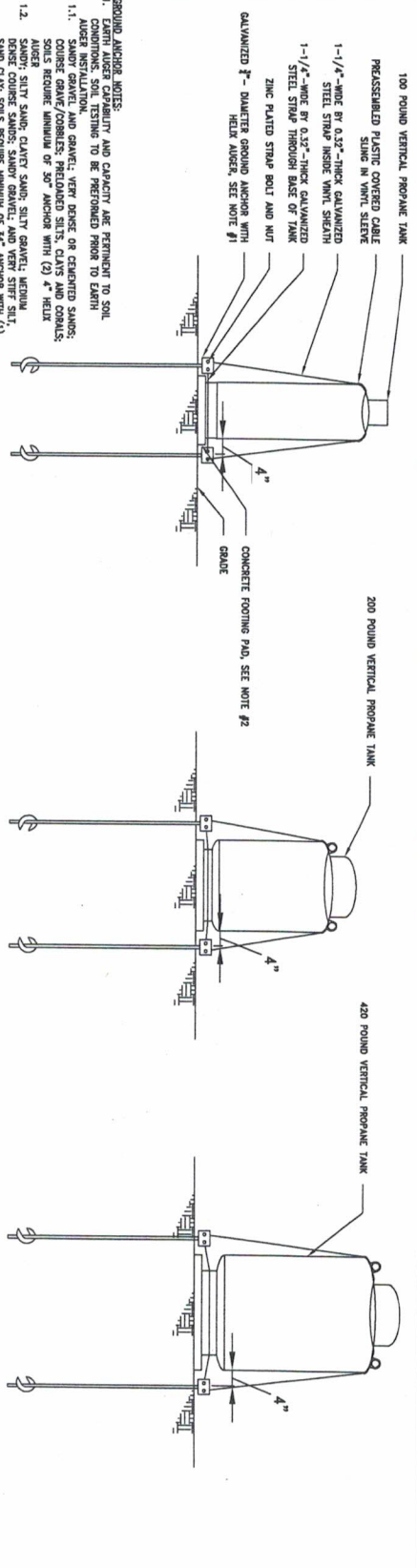


2 OIL TANK ANCHORING ON CONCRETE FLOOR
SCALE: N.T.S.

- CONCRETE SLAB NOTES:**
1. CONCRETE TO BE INSTALLED IN 2 LIFTS
 2. MINIMUM 2100 PSI OR APPROVED EQUAL
 3. DRY CONCRETE ANCHOR FOR PRECASTING CONCRETE SLAB
 4. WHITE MAN WILKINSON OR APPROVED EQUAL
 5. ZINC PLATED STRAP BOLT AND NUT, WHITE MAN WILKINSON OR APPROVED EQUAL
 6. INSTALL PER MANUFACTURER'S INSTRUCTIONS
 7. ANCHOR INTO BASEMENT FLOOR - THE STRAP - 7/8" x 4" x 10" LENGTH
 8. ANCHOR ANCHOR, SIMPSON STRONG-TIE STRAP - 7/8" x 4" x 10" OR CONCRETE MINIMUM 28 DAY COMPRESSIVE STRENGTH OF 4,000 PSI
 9. CONCRETE SLUMP - 3"-6"; AIR ENTRAINMENT - 5% TO 8%
 10. EXISTING CONCRETE FLOORS WITH LESS THAN 4" THICKNESS SHALL CUT AWAY CONCRETE AND USE EARTHEN ANCHER ANCHORING SHOWN ABOVE IN DETAIL 1

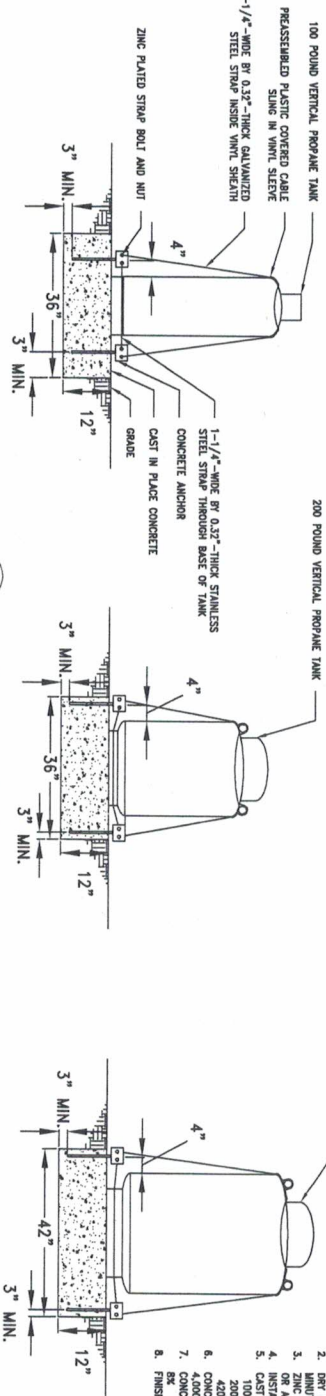
CATSKILL WATERSHED CORPORATION
RESIDENTIAL FUEL STORAGE TANKS
ANCHORING DETAILS

INSIDE FUEL
STORAGE TANK
275 & 330
GALLON



- GROUND ANCHOR NOTES:**
1. EARTH AUGER CAPABILITY AND CAPACITY ARE PERTINENT TO SOIL CONDITIONS. SOIL TESTING TO BE PERFORMED PRIOR TO EARTH ANCHORING.
 - 1.1. SANDY GRAVEL AND GRAVEL: VERY DENSE OR COMPACTED SANDS: COURSE GRAVEL/COBBLES: PRELOADED SILTS, CLAYS AND CORALS: SOLS REQUIRE MINIMUM OF 50" ANCHOR WITH (2) 4" HELIX AUGER
 - 1.2. AUGER SILTY SAND, CLAYEY SAND, SILTY GRAVEL, MEDIUM DENSE COURSE SANDS: SANDY GRAVEL; AND VERY STIFF SILT AND CLAY. SOLS REQUIRE MINIMUM OF 54" ANCHOR WITH (1) 6" HELIX AUGER
 - 1.3. LOOSE TO MEDIUM DENSE SANDS: FIRM TO STIFF CLAYS AND WITH (1) 6" HELIX AUGER
 - 1.4. LOOSE SANDS: FIRM CLAYS: ALLUVIAL FILLS: SOLS REQUIRE MINIMUM OF 60" ANCHOR WITH (1) 6" HELIX AUGER
 2. TANK FOOTING SUPPORTS VARY, DEPENDING ON MANUFACTURER'S FOOTING PAD. 100LB TANK: 2'x30" Wx20" D; 200LB TANK: 2'x36" Wx24" L; 420LB TANK: 2'x50" Wx30" D
 3. GROUND ANCHORS GALVANIZED STEEL 1/2" - DIAMETER WITH HELIX AUGER, WHITE MAN OR APPROVED EQUAL.
 4. ZINC PLATED STRAP BOLT AND NUT, WHITE MAN WAKASHI OR APPROVED EQUAL.
 5. INSTALL PER MANUFACTURER'S INSTRUCTIONS

1 VERTICAL PROPANE TANK WITH EARTH AUGER
SCALE: N.T.S.



2 VERTICAL PROPANE TANK ON CONCRETE SLAB
SCALE: N.T.S.

- CONCRETE SLAB NOTES:**
1. ANCHORS FOR WET CONCRETE INSTALLATION, WHITE MAN WAKASHI 2-10DNY OR APPROVED EQUAL.
 2. DRY CONCRETE ANCHOR FOR PRESTRESSING CONCRETE SLAB, WHITE MAN WAKASHI 2-10DNY OR APPROVED EQUAL.
 3. ZINC PLATED STRAP BOLT AND NUT, WHITE MAN WAKASHI OR APPROVED EQUAL.
 4. INSTALL PER MANUFACTURER'S INSTRUCTIONS
 5. CAST IN PLACE CONCRETE
 6. 420LB TANK: 36" W x 36" L x 12" H
 7. 200LB TANK: 36" W x 42" L x 12" H
 8. 100LB TANK: 42" W x 42" L x 12" H
 9. CONCRETE MINIMUM 28 DAY COMPRESSIVE STRENGTH OF 4000 PSI
 10. CONCRETE SLUMP - 5"-5.5", AIR ENTRAINMENT - 5% TO 8%.
 11. FINISH TOP OF CONCRETE TO SHED WATER

DRG. SITE NOTES:
1. ALWAYS CHECK FOR UNDERGROUND UTILITIES BEFORE INSTALLING EARTH AUGER.

CATSKILL WATERSHED CORPORATION
RESIDENTIAL FUEL STORAGE TANKS
ANCHORING DETAILS

PROPANE TANK
ANCHORING
100LB, 200LB
& 420LB

Sheet No. 30